

AcuteBand Pre-Stained Protein Ladder

Datasheet

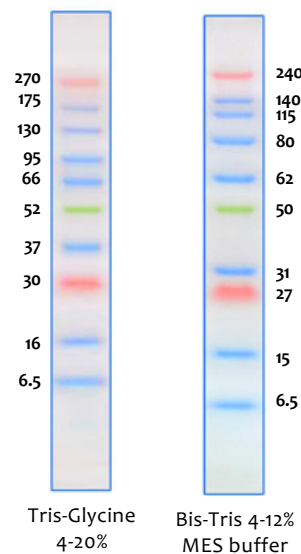
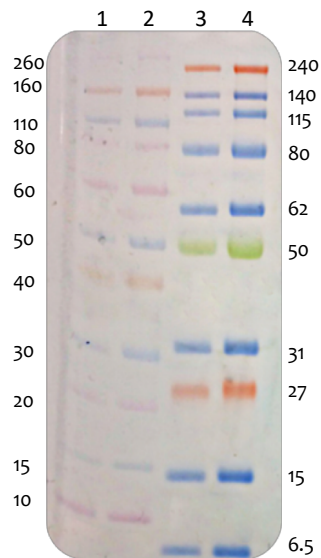
The AcuteBand Pre-stained Protein Ladder is a three-color protein standard with 10 pre-stained proteins covering a range of molecular weights from 6.5 to 270 kDa. Designed for monitoring protein separation during SDS-PAGE and verifying Western transfer efficiency on membranes and for approximating the size of proteins.

Features

- High-intensity, 3-colour MW determination
- Ultra-clear and expanded MW range (6.5-270kD)
- Clear separation for high MW proteins
- 100% electroblot transfer efficiency

Performance Data: 4-12% Bis-Tris MES SDS

- Lane 1: Novex Sharp (ThermoFisher) 5µl
- Lane 2: Novex Sharp (ThermoFisher) 10µl
- Lane 3: AcuteBand Pre-Stained Protein Ladder 5µl
- Lane 4: AcuteBand Pre-Stained Protein Ladder 10µl



Recommended Use

- 3 µl to 5 µl per loading for clear visualization during electrophoresis on 15-well or 10-well mini-gel, respectively
- 2.5 µl per well for Western blotting applications

Storage Buffer

62.5 mM Tris-H₃PO₄ (pH 7.5 at 25 °C), 1 mM EDTA, 2% SDS, 10 mM DTT, 1 mM NaN₃, 33% glycerol

Quality Control

Under suggested conditions, AcuteBand Pre-Stained Protein Ladder resolves 10 major bands in 4-12% Bis-Tris Gel (MES buffer) and after Western blotting to a nitrocellulose membrane

Storage

Stable for up to 2 weeks at 25°C.

Stable for up to 3 months at 4°C.

For long term storage, store at -20°C.

Ordering Information

Item	Size	Cat-No.
0.5 ml AcuteBand Pre-Stained Protein Ladder (2 x 0.25 ml)	2 x 0.25ml	LU5001-0500
2.5 ml AcuteBand Pre-Stained Protein Ladder (10 x 0.25 ml)	10 x 0.25ml	LU5001-2500